

Axial Flow Fan with Splitter Blades by Numerical Study on Internal Flow

A. Mahesh babu¹ T.V.Naven kumar²

*(Assistant professor Department of mechanical engineering, CMR Engineering college, Jntuh, India
Email: maheshindian100@gmail.com)

** (Assistant professor, Department of mechanical engineering, CMR Engineering college, Jntuh, India
Email: navipavi4@gmail.com)

ABSTRACT: The splitter blades are widely used in axial compressors and play an active role in the improvement of the overall performance of compressors. However, little research on the application of splitter blades to small axial flow fans is conducted. This paper designs a splitter blade small axial flow fan (model B) with a small axial flow fan as the prototype fan (model A) by adding short blades at the second half part of the passageway among long blades of model A. The steady simulation for the two models was conducted with the help of RNG $k-\epsilon$ turbulence model provided by software Fluent, and static characteristics and internal flow characteristics of the two models were compared and analyzed. Results show that splitter blades can improve the unsteady flow in the small flow rate region and also have a positive role to increase static pressure rise and efficiency in the higher flow rate region. The variation of static pressure gradient on the meridian plane in model B is well-distributed. The static pressure on the blade surface of model B distributes more uniformly. Splitter blades can suppress the secondary flow from pressure side to suction side in the leading edge because the pressure difference between suction side and pressure side in model B is generally lower than that of model A. And it also can restrain the vortex shedding and flow separation, and further it may be able to get the aerodynamic noise lower because static pressure gradient on the blade surface is well-distributed and the vortex shedding is not developed. Therefore, the performance of the fan with splitter blades is better than that of the prototype fan. The findings of this paper can be a basis for the design of high performance small axial flow fans.

Keywords: Small Axial Flow Fan: Splitter Blade: Internal Flow: Performance

I. INTRODUCTION

The technology of splitter blade is adding short blades at the passageway among the original long blades of impellers, and the splitter blade is known as short blade or small blade. The short blades and long blades are alternative arrangements, which can improve the distribution of the internal flow field of impellers; what's more, it also can increase the load of blades and pressure ratio of impellers, it is an effective method to improve the overall performance of impellers. The technology of splitter blade is widely used in centrifugal impellers, and then the research and application in the axial impellers are starting lately. In 1974, Wennerstrom applied the technology of splitter blade in the axial compressors, he decreased the deviation angle of outlet airflow in the high load rotor by changing the aerodynamic arrangement. Because of being limited by the methods of numerical simulation and experiment at that moment, the application of splitter blades to the axial impellers was not successful and this technology was stalled.

Since 1980s, with the development of computer and methods of full three-dimensional numerical simulation, the technology of splitter blade was applied again and it had obtained the significant achievements. Tzuoo *et al.* reviewed the results of a detailed analytical study performed on Wennerstrom's rotor, followed by the details of a redesign effort using advanced design methodology, and the results showed that the extensive flow separation observed in Wennerstrom's rotor can be completely eliminated by redesigning the main blade and splitter vane. Yongxin Zhang *et al.* found that splitter could reconstruct the balance of pressure in rotor passage, and controlled the flow near rotor blade. Ming Yan *et al.* studied flow characteristics of one axial compressor rotor with splitter, they concluded that the rotor with splitter could be operated with higher total pressure ratio, higher efficiency and larger mass flow than normal designed rotors, under the high loaded condition and with the same surge margin. Besides, many scholars paid their attention to the influence of the chord length of splitter blades and circumferential position in impeller to the performance of rotors.

The small axial fans are influenced by sizes and applications, and the internal flow characteristics of small axial fans are different from the large scale fans. So, the researches about small axial flow fans have attracted many scholars in recent years. The application of splitter blades in axial machineries is mainly concentrated on high-loaded compressors currently. However, little re-search on the application of splitter blades to small axial flow fans is conducted. This paper designs a splitter blade small axial flow fan (model B) with a small axial flow fan as the prototype fan (model A) by adding short blades at the second half part of the passageway among long blades of model A. The steady simulation for the two models is conducted with the help of RNG k- ϵ turbulence model provided by software Fluent, and static characteristics and internal flow characteristics of the two models are compared and analyzed.

II. GEOMETRICAL MODELS

In this paper, model A is the prototype fan, as shown in **Figure 1(a)**. The diameter of fan is 85 mm, hub ratio is 0.72, number of blades is 5, the rated rotating speed is 3000 r/min, and the tip clearance is 1.5 mm. On the basis of model A, this paper designs a small axial flow fan with splitter blades (model B), *i.e.* adding short blades at the second half part of the passageway among long blades of model A, as shown in **Figure 1(b)**. Meanwhile, the location of short blades is in the middle of passage-ways, the geometric similarity ratio between long blades and short blades is 5:2.

Figure 2 shows the blade cascade of small axial fan with splitter blades. It represents the distribution of short blades in the passageway clearly. Meanwhile, it also can be found that the aerodynamic arrangement of model B must be changed by splitter blades, and differ from model A.

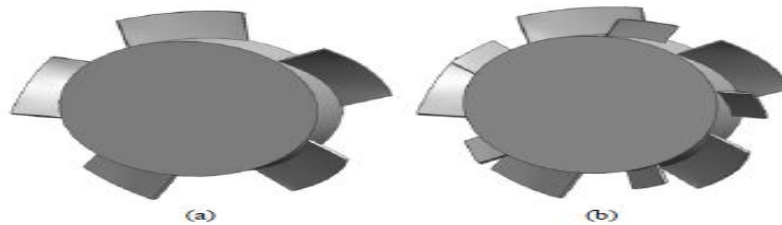


Figure 1. Fan models. (a) Model A; (b) Model B.

III. MESHING AND NUMERICAL SIMULATION

3.1. Computational Domain and Grid

In this study, the software Gambit is applied to divide grids, and the center of hub is set as the coordinate origin. To ensure the reliability of numerical calculation, the inlet and outlet of fan should be extended. The computational domain is divided into 4 parts: the extension region of inlet and outlet, rotating fluid region and pipeline region, as shown in **Figure 3**. Meanwhile, non-structural grids (tetrahedral T-grid) are used in rotating fluid region and pipeline region, and the **Figure 4(a)** represents the grids of fan. The length of the extension of inlet is 85 mm and its diameter is 120 mm while the extensions of outlet are 510 mm and 340 mm respectively. The structural grids (hexahedral cooper mesh) are used in the regions of front channel and back channel, and the interval of grids is three, as shown in **Figure 4(b)**. additionally, the degree of twist of grids is predominantly between 0.1 - 0.5.

[2] Boundary Conditions and Numerical Calculation

In this paper, mass flow inlet is set as inlet boundary Condition, while, the outlet boundary condition is pressure outlet. The solid walls such as vane surfaces and hub satisfy the no-slip condition in the computational domain.

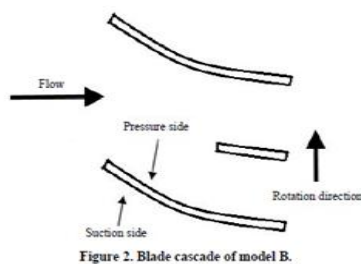


Figure 2. Blade cascade of model B.

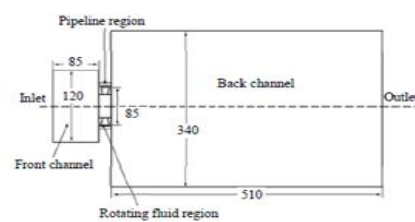


Figure 3. Computational domain.

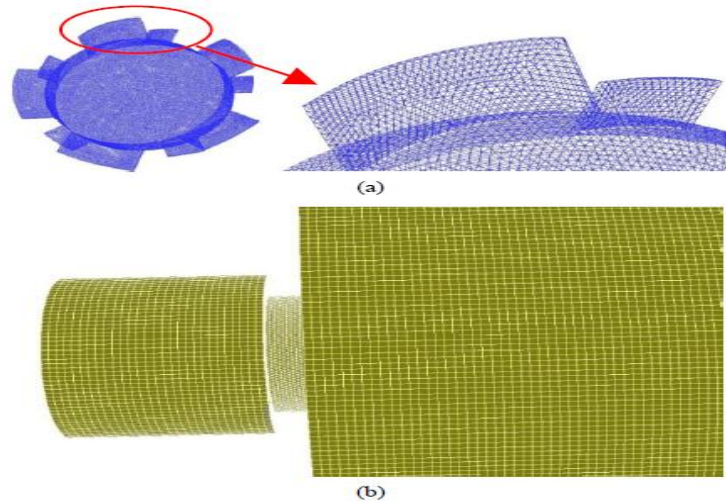


Figure 4. Computational grids. (a) Grids of fan; (b) Grids of the extension of inlet and outlet.

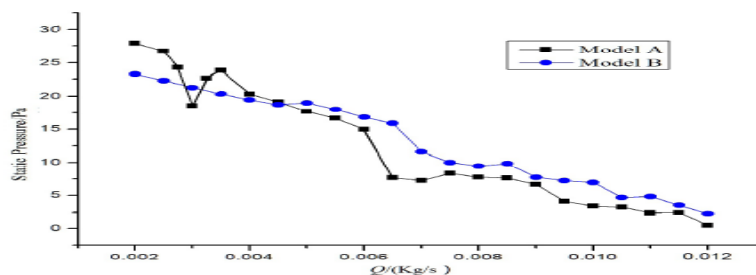


Figure 5. Performance curve of flow rate and static pressure.

The finite volume method is carried out in numerical calculation. It is assumed that the flow field of the im-peller is incompressible and inviscid. The steady simula-tion for the two models is conducted with the help of RNG k- ϵ turbulence model provided by software Fluent. Meanwhile, second order upwind difference scheme is adopted as numerical discretization method of governing equation. The residuals are equal or less than the given standard (10^{-3}), and relative error of flow rate at the inlet as well as outlet is less than 0.5%, then the calculation is convergence.

IV. RESULTS AND DISCUSSIONS

4.1. Static Characteristics of Models

The static characteristics are an important factor to ana-lyze the performance of small axial fan. Meanwhile, the static characteristics are reflected by the P-Q and the η -Q performance curves in general, where P is static pres-sure and η is efficiency. In this research, the different inlet flow rates are set, and the steady flow fields of fans are got in 21 flow- rate conditions from $Q = 0.002$ kg/s to $Q = 0.012$ kg/s at the flow-rate interval of $Q = 0.0005$ kg/s. **Figures 5** and **6** represent P-Q and η -Q performance curves obtained from steady simulation of two models.

From **Figure 5**, it can be seen that the static pressure rise at the inlet and outlet of the two models decrease with the increase of inlet flow rate Q on the whole. In addition to this, when the inlet flow rate Q is less than 0.045 kg/s, fans are working under the small flow rate at the moment, so the flow is unsteady. For this reason, the curve of model A have a concave region, nevertheless, this phenomenon does not appear in model B. Thus it can be concluded that splitter blades can improve the un-steady flow in the small flow rate region. When the inlet flow rate $Q > 0.045$ kg/s, the static pressure rise of model B is always higher than that of model A. Hence, splitter blades have a positive role to increase the static pressure rise.

Figure 6 shows the η -Q curves of two models. It is found that the efficiency of the two models are closely similar while 0.002 kg/s $< Q < 0.006$ kg/s, when $Q > 0.006$ kg/s, the efficiency of model B is notably higher than that of model A.

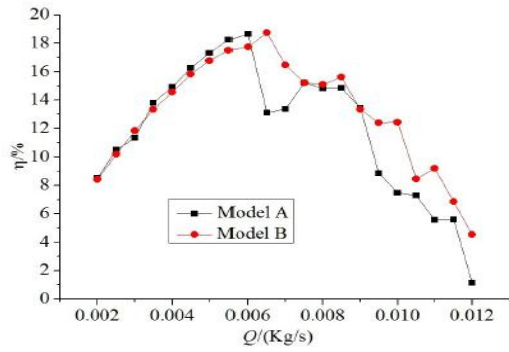


Figure 6. Performance curve of flow rate and efficiency.

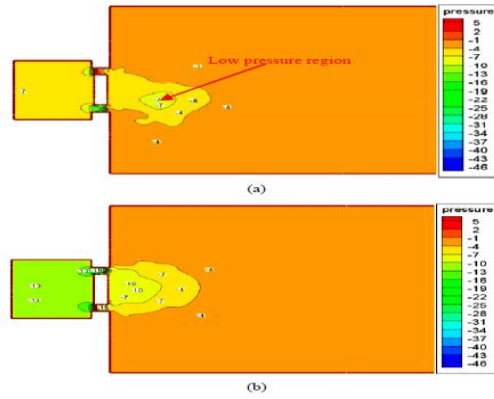
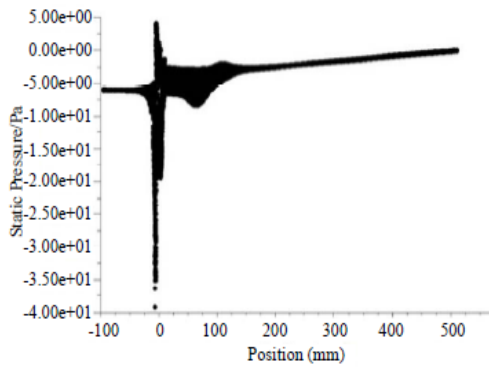
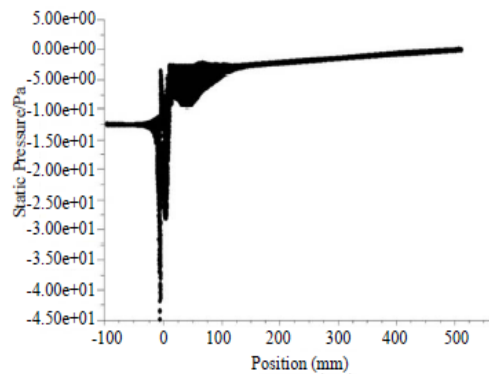


Figure 7. Distribution of static pressure on the meridian plane. (a) Model A; (b) Model B.



(a)



(b)

Figure 8. Distribution of the static pressure along with the axial direction. (a) Model A; (b) Model B.

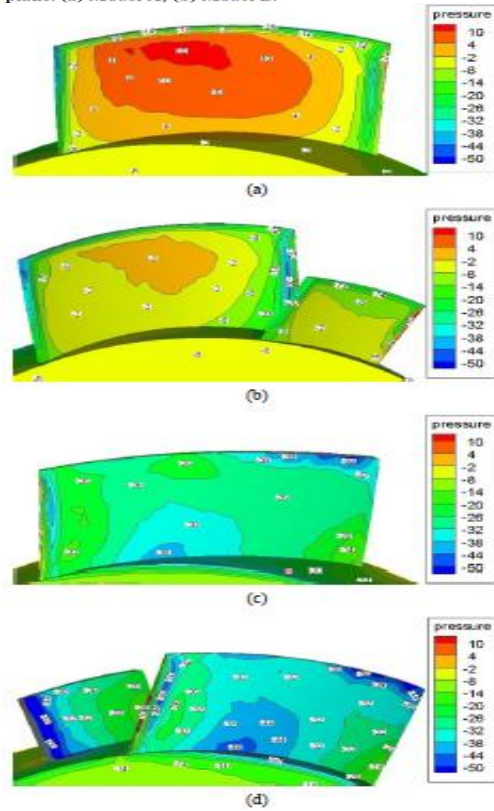


Figure 9. Distribution of static pressure on suction side and pressure side in two models. (a) Pressure side of model A; (b) Pressure side of model B; (c) Suction side of model A; (d) Suction side of model B.

4.2. Pressure Distribution

Figures 7(a) and **(b)** illustrate the contour distribution of the static pressure on the meridian plane of two models respectively when the mass flow rate is 0.007 kg/s. It indicates that the pressure at the outlet is higher than inlet pressure because of the influence of fans. And beyond this, it also shows that the static pressure rise at the inlet and outlet of model B is higher than that of model A. From **Figure 7(a)**, it represents that there is a low pressure region in front of the fan and this region is surrounded by the higher pressure region, then the variation of pressure gradient in model B is well-distributed in **Figure 7(b)**. Furthermore, the distribution of pressure gradient is symmetrical distributed along the axis of hub in model B, while model A is deflected sideways. For these reasons, the internal flow of model A is very complicated, so it may be easy to cause secondary flow and vortex.

Figure 8 represents the distribution of the static pressure along with the axial direction of two models. The abscissa is axial position in this figure. After analysis, it can be seen that the pressure at the outlet is higher than inlet pressure, and the maximum pressure of model A is higher than that of model B in the rotating fluid region or pipeline region. It also concludes that the static pressure rise at the inlet and outlet of model B is higher than that of model A, which is the same as the conclusions of

Figure 7. The distribution of static pressure on suction side and pressure side in two models is shown in **Figure 9**. It can be seen from the figure that the static pressure of pressure side is generally higher than that of suction side. Then by contrasting **Figures 9(a)** and **(b)**, it can be found that the static pressure on pressure side of model B distributes more uniformly and the static pressure of pressure side in model A is obviously higher than that of model B, which means fluid can be transmitted smoothly in model B because of lower energy consumption to balance the pressure gradient. Moreover, pressure pulsation amplitude of turbulent boundary layer may be reduced, which controls the generation of separation vortices. And combining with the figures of suction side of two models, it concludes that splitter blades maybe can restrain reflux and vortex to some extent. Besides these, the figure also shows that the pressure difference between suction side and pressure side in model B is on the whole lower than further understand the internal flow characteristics, the vorticity distribution of small axial fan with splitter blades should be discussed.

In this research, the rotative surfaces of two models are selected as object of study, where the rotative surface is also known as S_1 stream surface. **Figure 10** shows the geometrical position of the rotative surface at 1/3 blade height, the diameter of rotative surface is 69 mm.

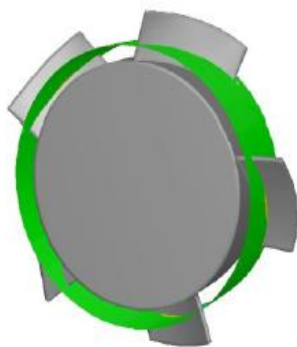


Figure 10. Geometrical position of the rotative surface at 1/3 blade height.

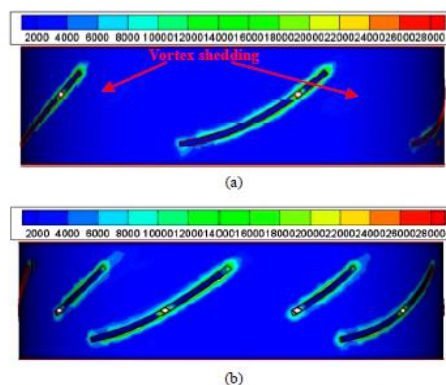


Figure 11. The vorticity contour distribution on the rotative surface at 1/3 blade height. (a) Model A; (b) Model B.

The vorticity contour distribution on the rotative surface at 1/3 blade height of two models is shown in **Figure 11**. From **Figures 11(a)** and **(b)**, it can be seen that the vortex shedding is existed in the trailing edge of model A because the highly centralized region of vorticity is usually regarded as vortex. However, the vortex shedding is not developed in model B. The existence of the vortex may increase energy consumption and degrade performance of fans. Meanwhile, aerodynamic noise of model A is higher than that of model B according to the vortex-sound theory. Therefore, it can be concluded that that of model A, especially in the leading edge. So, the secondary flow from pressure side to suction side can be suppressed.

III. VORTICITY DISTRIBUTION

Vorticity derives from the velocity gradient exist in the flow field, and it is an important physical quantity to de-scribe the internal flow of fluid, because the vorticity relates to flow separation, aerodynamic noise and other phenomena in the flowing fluid. Therefore, in order to further understand the internal flow characteristics, the vorticity distribution of small axial fan with splitter blades should be discussed. In this research, the rotative surfaces of two models are selected as object of study, where the rotative surface is also known as S_1 stream surface. **Figure 10** shows the geometrical position of the rotative surface at 1/3 blade height, the diameter of rotative surface is 69 mm. The vorticity contour distribution on the rotative sur-face at 1/3 blade height of two models is shown in **Figure 11**. From **Figures 11(a)** and **(b)**, it can be seen that the vortex shedding is existed in the trailing edge of model A because the highly centralized region of vortic-ity is usually regarded as vortex. However, the vortex shedding is not developed in model B. The existence of the vortex may increase energy consumption and degrade performance of fans. Meanwhile, aerodynamic noise of model A is higher than that of model B according to the vortex-sound theory. Therefore, it can be concluded that splitter blades may be able to suppress the vortex shed-ding and flow separation, and then improve the perform-ance of fans to some extent, such as static characteristics and aerodynamic noise.

V. CONCLUSIONS

The paper designs a small axial fan with splitter blades. With the help of the numerical simulation, the influence of splitter blades on the performance of small axial fan is investigated. The static characteristics of models are rep-resented, and the internal flow characteristics are dis-cussed from two aspects, *i.e.* pressure and vorticity. The conclusions are shown as followed:

- 1) Splitter blades can improve the unsteady flow of small axial flow fan in the small flow rate region. When the inlet flow rate $Q > 0.045$ kg/s, the static pressure rise of model B is obviously higher than that of model A, and the efficiencies of the two models are closely similar while 0.002 kg/s $< Q < 0.006$ kg/s; when $Q > 0.006$ kg/s, the efficiency of model B is notably higher than that of model A. So, splitter blades have a positive role to in-crease the static pressure rise and efficiency in the higher flow rate region.
- 2) Fluid can be transmitted smoothly in the small axial fan with splitter blades, because the static pressure dis-tributes more uniformly. And pressure pulsation ampli-tude of turbulent boundary layer may be reduced, which controls the generation of separation vortices. Splitter blades can suppress the secondary flow from pressure side to suction side in the leading edge.
- 3) Splitter blades can restrain the vortex shedding and flow separation, and further it may be able to get the aerodynamic noise lower because static pressure gradient on the blade surface is well-distributed and the vortex shedding is not developed.

REFERENCES

- [1] J. F. Zhang, Y. Yuan, L. T. Ye, *et al.*, "Research State of The Centrifugal Machineries with Impeller Adding Split-ter Blades," *Fluid Machinery*, Vol. 39, No. 11, 2011, pp. 38-44.
- [2] A. J. Wennerstrom and G. R. Frost, "Design of a Rotor Incorporating Splitter Vanes for a High Pressure Ratio Supersonic Axial Compressor Stage," *United States Air Force Systems Command*, ARL-TR-74-0110, 1974.
- [3] A. J. Wennerstrom, "Test of a Supersonic Axial Com-pressor Stage Incorporating Splitter Vanes in The Rotor," *United States Air Force Systems Command*, ARL-TR-75-0165, 1975.
- [4] X. Qiu and T. Dang, "Three-Dimension Inverse Method for Turbomachine Blading with Splitter Blades," ASME Paper, 2000-GT-0526, 2000.
- [5] H. P. Li and H. X. Liu, "Numerical Simulation Analysis of Leakage Flow in Compressor Cascade with Splitter," *Journal of Beijing University of Aeronautics and Astro-nautics*, Vol. 33, No. 1, 2007, pp. 31-34.
- [6] H. P. Li and H. X. Liu, "Analysis of Flow Mechanism in 2-D Compressor Cascade with Splitter," ASME Paper, GT-2005-68207, 2005.
- [7] K. L. Tzuoo, S. S. Hingorani and A. K. Sehra, "Optimiza-tion of a Highly-Loaded Axial Splittered Rotor Design," *Revue Francaise de Mecanique*, Vol. 1, No. 3, 1992, pp. 235-246.
- [8] Y. X. Zhang, Z. P. Zou, M. Yan and M. Z. Chen, "Flow Analysis of a Single-Stage Axial Flow Compressor with Splitter Rotor," *Journal of Aerospace Power*, Vol. 19, No. 1, 2004, pp. 89-93.
- [9] M. Yan and M. Z. Chen, "Flow Performance Analysis in an Axial Compressor Rotor with Splitter," *Journal of Propulsion Technology*, Vol. 24, No. 4, 2002, pp. 280-282.
- [10] X. M. Sun, P. G. Yan, S. T. Wang and Q. Zhong, "Inves-tigation of the Influence of Splitter Chord Length on the Transonic Axial Fan Rotor," *Journal of Aerospace Power*, Vol. 22, No. 12, 2007, pp. 2050-2054.

ABOUT AUTHOR



A. Mahesh babu

Assistant professor ,

Department of mechanical engineering,

CMR Engineering college, Jntuh, India

Email: maheshindian100@gmail.com



T.V.Naven kumar

Assistant professor,

Department of mechanical engineering,

CMR Engineering college, Jntuh, India

Email: navipavi4@gmail.com